



## 60 The Factory, Memorial Avenue

Slough, Slough, SL1 3GZ

**£1,800 Per month**

Welcome to this stunning new-build flat at The Factory on Memorial Avenue in Slough. This contemporary property offers a perfect blend of modern living and convenience, making it ideal for first-time buyers and those looking to downsize.

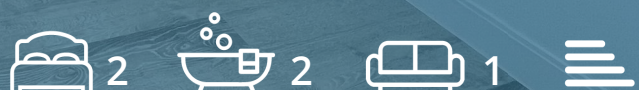
Spanning an impressive 789 square feet, this flat features a spacious reception room that provides a warm and inviting atmosphere, perfect for entertaining guests or enjoying a quiet evening in. The property boasts two well-proportioned bedrooms, ensuring ample space for relaxation. With two bathrooms, including an en-suite, the flat is designed to accommodate the needs of a busy lifestyle, providing both comfort and privacy.

The Factory is situated in a vibrant area of Slough, offering easy access to local amenities, transport links, and green spaces. Whether you are commuting to work or exploring the local shops and restaurants, this location provides the perfect balance of urban living and community charm.

This flat is not just a home; it is a lifestyle choice that embraces modernity and convenience. With its stylish design and thoughtful layout, it is ready for you to move in and make it your own. Do not miss the opportunity to own this exceptional property in a sought-after location.

### Viewing

Please contact us on 020 3198 4517 if you wish to arrange a viewing appointment for this property or require further information.





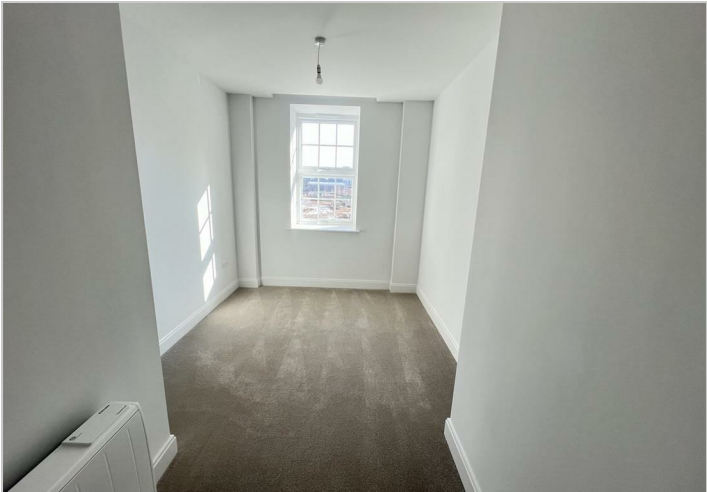
Floor Plan



Area Map



Energy Efficiency Graph



These particulars, whilst believed to be accurate are set out as a general outline only for guidance and do not constitute any part of an offer or contract. Intending purchasers should not rely on them as statements of representation of fact, but must satisfy themselves by inspection or otherwise as to their accuracy. No person in this firms employment has the authority to make or give any representation or warranty in respect of the property.